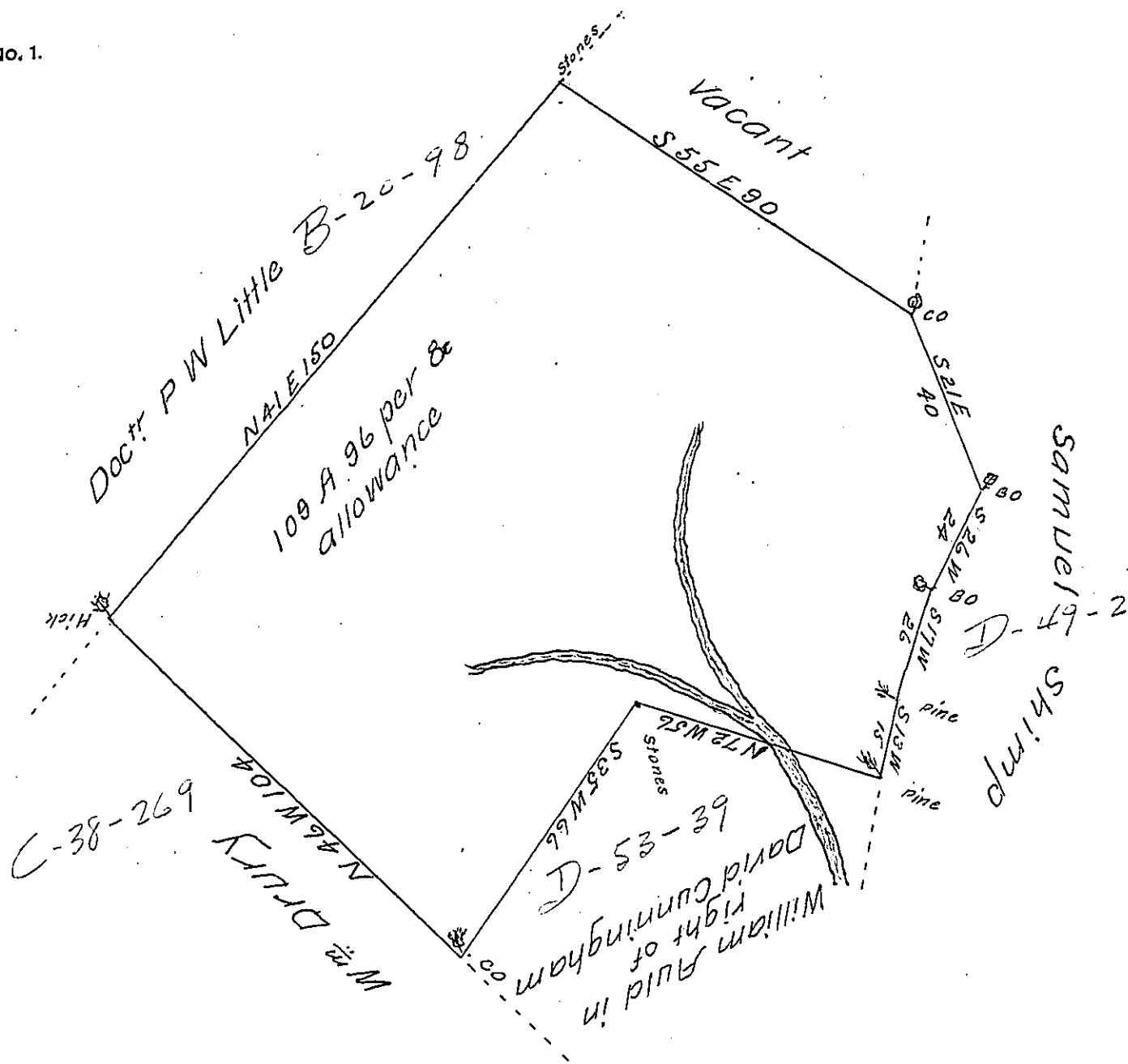


FORM NO. 1.



A Draught of a Tract of Land situate in Montgomery Town-
 ship on the east side of the Two top Mountain Containing
 One Hundred & nine Acres & ninety six perches and
 allowance of 6 pr Cent for Roads &c Surveyed June 21st
 1829 In pursuance of a warrant granted William
 Auld for 100 Acres bearing date June 8th 1829

Hugh Auld, D.S.

Jacob Salade Esq.
 Surveyor General of Pa.

IN TESTIMONY that the above is a copy of the original remaining on file in
 the Department of Internal Affairs of Pennsylvania, made
 conformably to an Act of Assembly approved the 16th day of
 February 1833, I have hereunto set my hand and caused
 the Seal of said Department to be affixed at Harrisburg,
 this fourteenth day of October 1907.

Henry Howell
 Secretary of Internal Affairs.